

Specifications



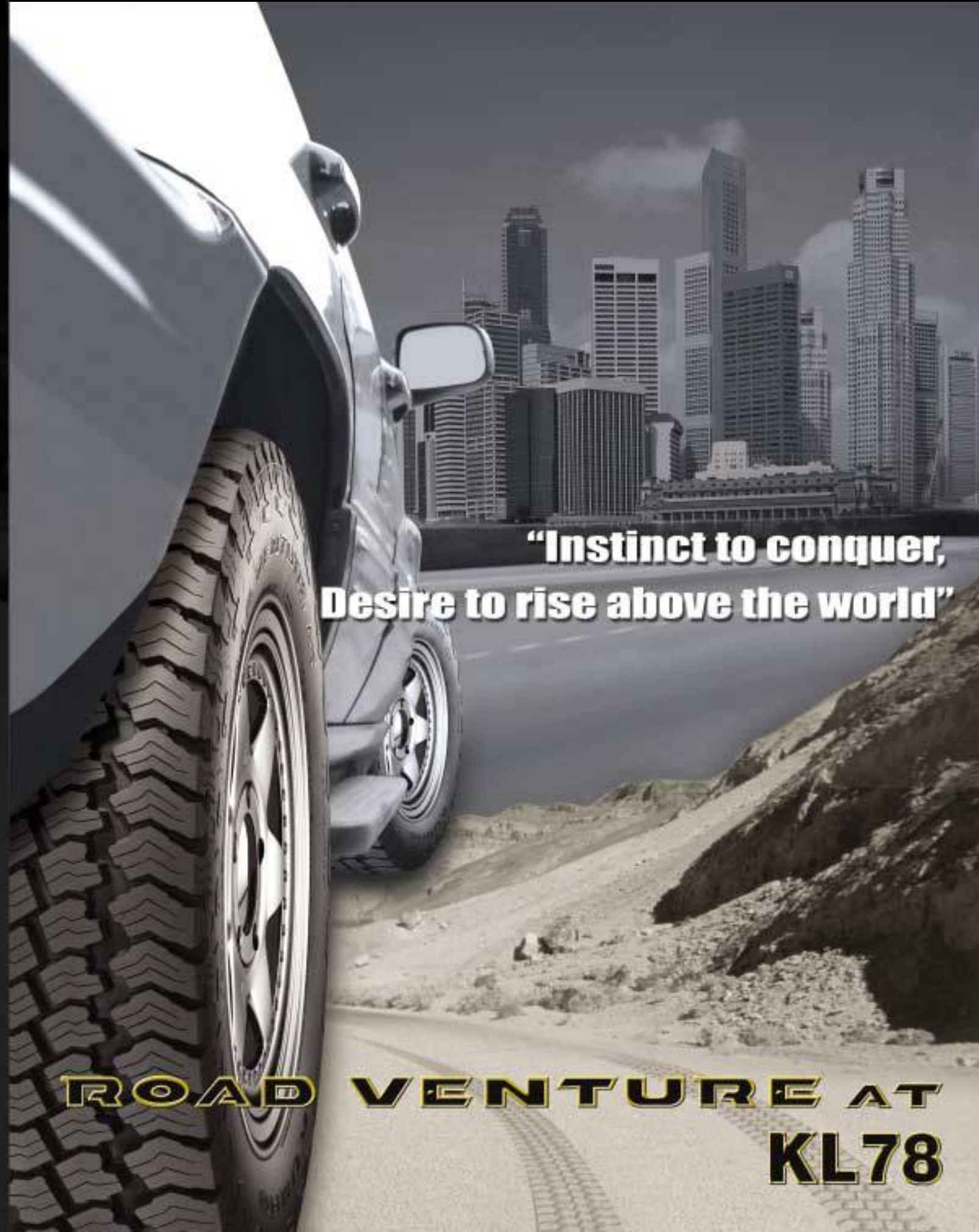
SIZE	PR	LI / SS	TYPE	STAN- DARD RIM	APPR- OVED RIM	SIZE	PR	LI / SS	TYPE	STAN- DARD RIM	APPR- OVED RIM
P245/75R16	4	109 S	BSW	7.0	6.5-8.0	205/75R15	4	97S	OWL	5.5	5.0-7.0
P245/70R16	4	106 S	BSW	7.0	6.5-8.0	255/75R15	4	110 S	OWL	7.0	6.5-8.5
P265/70R16	4	111 S	BSW	8.0	7.0-9.0	LT215/75R15	6	100 / 97 S	OWL	6.0	5.5-7.0
P265/70R17	4	113 S	BSW	8.0	7.0-9.0	LT235/75R15	6	104 / 101S	OWL	6.5	6.0-7.0
P285/70R17	4	117 S	BSW	8.5	7.5-9.5	LT325/60R15	6	106 S	OWL	9.5	9.0-11.0
P265/70R18	4	114 S	BSW	8.0	7.0-9.0	LT215/85R16	8	110 / 107 Q	OWL	6.0	5.5-7.0
195R15	RF	100 S	BSW	5.5	5.0-6.5	LT215/85R16	10	115 / 112 Q	OWL	6.0	5.5-7.0
215R15	RF	105 S	BSW	6.0	5.5-7.0	LT235/85R16	10	120 / 116 Q	OWL	6.5	6.0-7.0
205R16	RF	104 S	BSW	6.0	5.5-6.5	LT225/75R16	8	110 / 107 Q	OWL	6.0	6.0-7.0
205R16	8	112 / 110 Q	BSW	6.0	5.5-6.5	LT225/75R16	10	115 / 112 Q	OWL	6.0	6.0-7.0
P215/75R14	4	98 S	OWL	6.0	5.5-7.0	LT245/75R16	10	120 / 116 Q	OWL	7.0	6.5-7.5
P215/75R15	4	100 S	OWL	6.0	5.5-7.0	LT265/75R16	6	112 / 109 Q	OWL	7.5	7.0-8.0
P235/75R15	4	105 S	OWL	6.5	6.0-8.0	LT265/75R16	8	119 / 116 Q	OWL	7.5	7.0-8.0
P235/75R15	XL	108 S	OWL	6.5	6.0-8.0	LT265/75R16	10	123 / 120 Q	OWL	7.5	7.0-8.0
P265/75R16	4	114 S	OWL	7.5	7.0-9.0	LT285/75R16	8	122 / 119 Q	OWL	8.0	7.5-9.0
P235/70R16	4	104 S	OWL	7.0	6.0-8.0	30X 9.50R15LT	6	104 S	OWL	7.5	6.5-8.5
P255/70R16	4	109 S	OWL	7.5	6.5-8.5	31X10.50R15LT	6	109 S	OWL	8.5	7.0-9.0
P255/65R17	4	108 S	OWL	7.5	7.0-9.0						

■ UTQG rating of 500, A, B for all P-metric sizes.



SIZE	PR	LI / SS	TYPE	STAN- DARD RIM	APPR- OVED RIM	SIZE	PR	LI / SS	TYPE	STAN- DARD RIM	APPR- OVED RIM
LT315/75R16	8	121 S	BSW	9.5	9.0-11.0	LT325/60R20	8	121 S	BSW	9.5	9.0-11.0
LT305/70R16	10	124 S	BSW	9.0	8.0-9.5	LT355/60R20	8	122 S	BSW	10.5	10.0-12.0
LT325/65R18	8	121 S	BSW	9.5	9.0-11.0	LT355/50R20	8	122 S	BSW	10.5	10.0-12.0
LT355/65R18	8	125 S	BSW	10.5	10.0-12.0	LT325/50R22	8	121 S	BSW	9.5	9.0-11.0
LT325/60R18	8	119 S	BSW	9.5	9.0-11.0						

■ BSW - Black Sidewall
■ OWL - Outlined White Letter

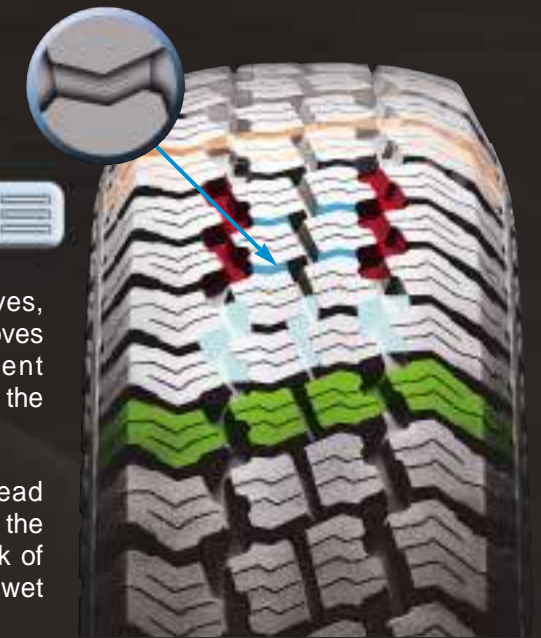


**“Instinct to conquer,
Desire to rise above the world”**

**ROAD VENTURE AT
KL78**

ROAD VENTURE AT KL78

Whoever experienced it would take this mind "It will be taken and used in common by many customers on and on"
 Verified performance already, Renewal "ROAD VENTURE AT KL78"



Pattern Features

- Circumferential zig-zag grooves, along with multiple lateral grooves and sipes, provides excellent driving traction both on and off the highway.
- Full depth circumferential tread grooves evacuate water from the footprint area, reducing the risk of hydroplaning, and improving wet handling and braking.
- Optimized tread groove tapers promote self cleaning of mud and snow, for all-terrain traction with minimal stone holding.
- Siped tie bars promote optimized treadwear/traction/ride balance for the life of the tire.
- Computer generated sequential pitch design for optimum traction with a quiet ride.

Structural Characteristics

1 Tread compound specifically designed to resist cutting and chipping.

2 High intensity steel belts and endless nylon cap ply application promote a uniform tire shape for excellent durability and higher speed capability, for the life of the tire.

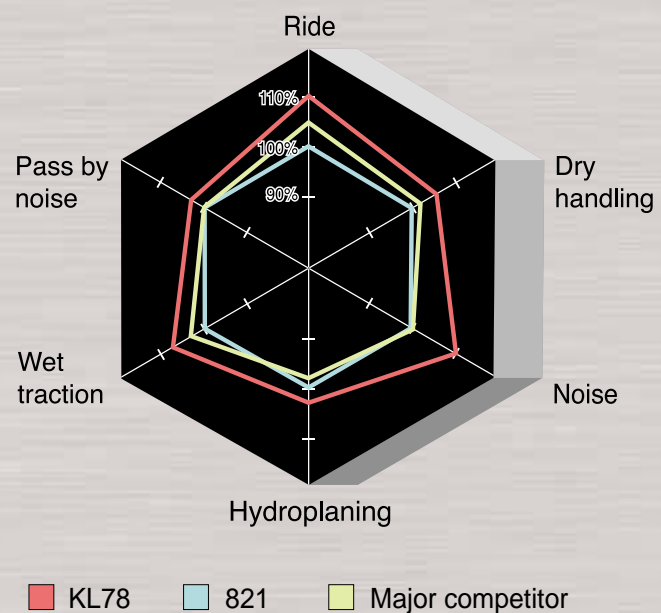


Sidewall Features

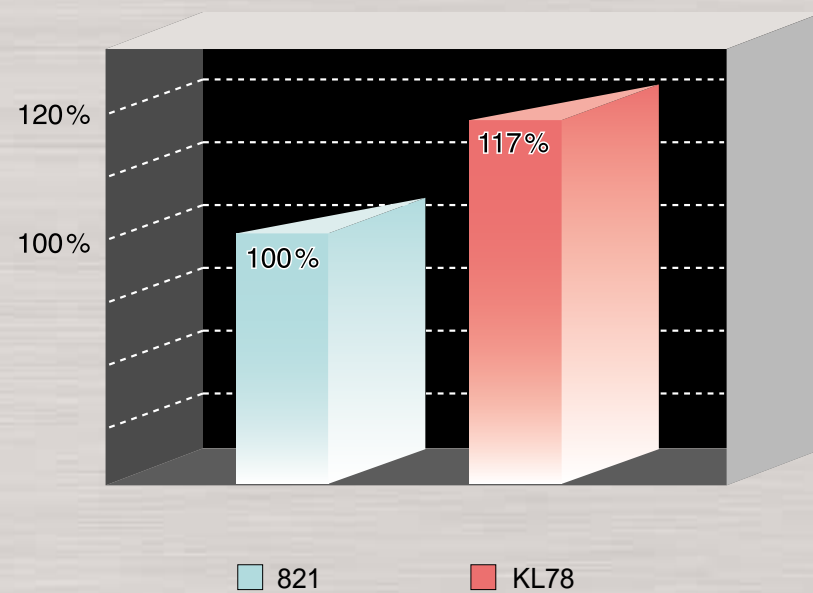
• Aggressive, dynamic sidewall styling, with raised upper sidewall protectors, offers consumers a powerful, stylized look along with additional protection from penetrations, cuts, and scrubbing.



Performance Comparison



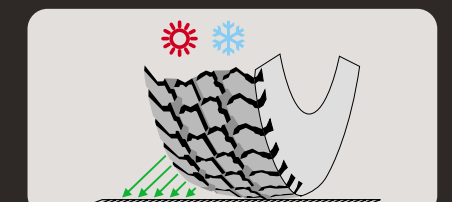
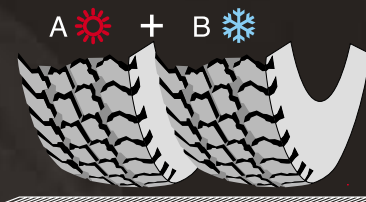
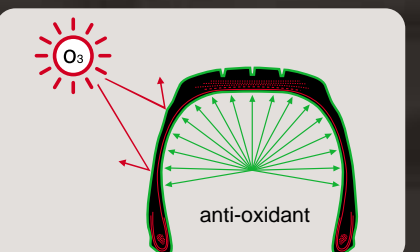
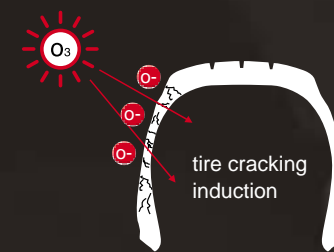
Mileage Comparison



Technology

• Because O₃ is unstable, it reacts easily with Tire Polymer Bondage.

• Anti-oxidant do migrates from inside to tire surface and blocking O₃, it prevents breaking polymer bondage and controls stability and long-term durability improved.



• Display superior grip on Snow & Ice road surface by optimum Polymer Blend System application.